

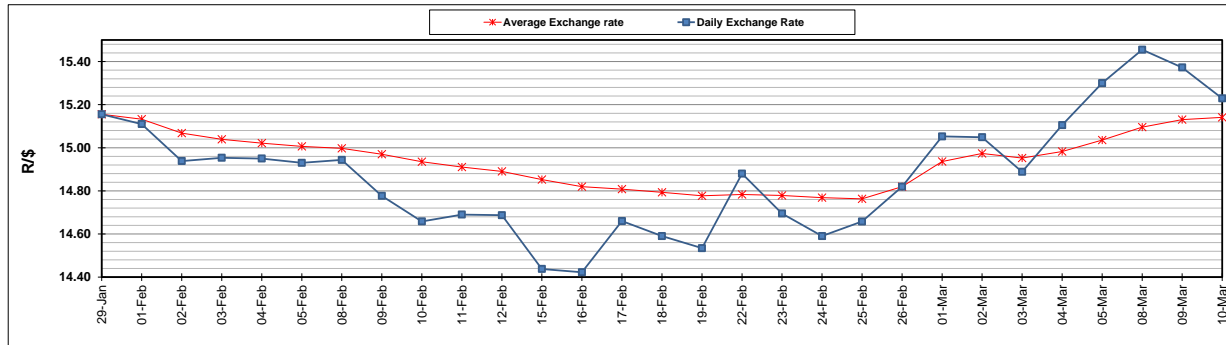
	PETROL 95 ULP	PETROL 93 ULP & LRP	DIESEL 0.05%	DIESEL 0.005%	ILL. PAR.
GAUTENG PUMP PRICE (SA c/l) AS FROM 03/03/2021	1,632.000	1,615.000	-	-	-
WHOLESALE PRICE (SA c/l) AS FROM 03/03/2021	-	-	1,412.420	1,416.820	845.688
SINGLE NATIONAL MAXIMUM RETAIL PRICE	-	-	-	-	1,071.000
BASIC FUEL PRICE - 10/03/2021 (SA c/l)	748.432	737.027	707.055	709.541	684.433
PRESS RELEASE CONTRIBUTION TO BFP 03/03/2021 - 10/03/2021 (SA c/l)	665.170	658.170	653.630	658.030	633.128
UNIT OVER/(UNDER) RECOVERY - 10/03/2021 (SA c/l)	(83.262)	(78.857)	(53.425)	(51.511)	(51.305)
AVERAGE BASIC FUEL PRICE 26/02/2021 - 10/03/2021	732.059	721.655	702.720	705.660	680.258
AVERAGE UNIT OVER/(UNDER) RECOVERY 26/02/2021 - 10/03/2021	(88.556)	(85.152)	(67.090)	(66.297)	(62.796)

ANALYSIS MOVEMENT OF AVERAGE OVER/(UNDER) RECOVERY

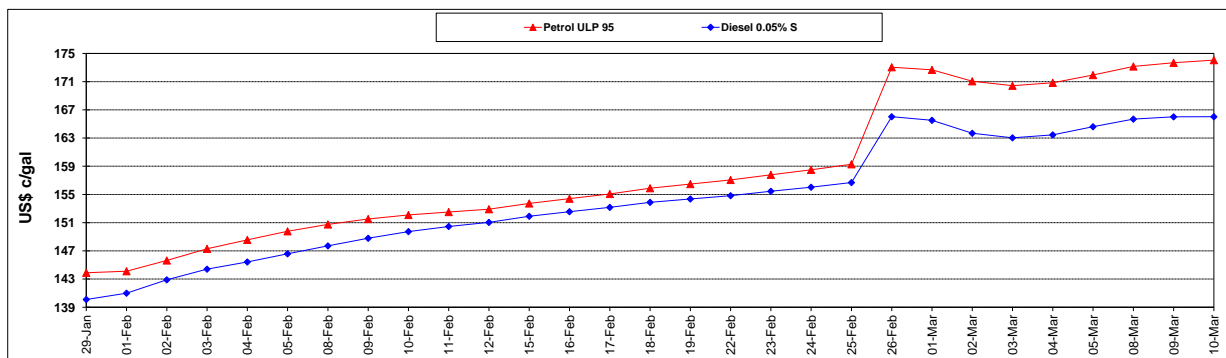
	PETROL 95	PETROL 93	DIESEL 0.05%	DIESEL 0.005%	ILL. PAR.
- MOVEMENT IN INTERNATIONAL PRODUCT PRICES	(70.275)	(67.131)	(49.542)	(48.676)	(45.810)
- MOVEMENT IN EXCHANGE RATE	(18.281)	(18.021)	(17.548)	(17.621)	(16.987)
AVERAGE UNIT OVER/(UNDER) RECOVERY 26/02/2021 - 10/03/2021	(88.556)	(85.152)	(67.090)	(66.297)	(62.796)

R/\$ EXCHANGE RATE - (R/\$15.2290 - 10/03/2021)

EXCHANGE RATE USED IN BASIC FUEL PRICE



INTERNATIONAL PRODUCT PRICES OF BASKET USED IN BASIC FUEL PRICE



BASIC FUEL PRICE IN SA CENTS PER LITRE

